



**FITTING INSTRUCTIONS FOR FP0219BK FORK PROTECTORS**  
**HONDA CB650R + CBR650R 2019-**



**THIS KIT CONTAINS THE ITEMS PICTURED AND LABELLED BELOW.**  
**DO NOT PROCEED UNTIL YOU ARE SURE ALL PARTS ARE PRESENT.**

**Please note that the way the kit is packed does not necessarily represent the way of mounting to the bike**

Please note that in cases where kits are packed with a plastic tube separating components on the spindle bar, this tube should be discarded.

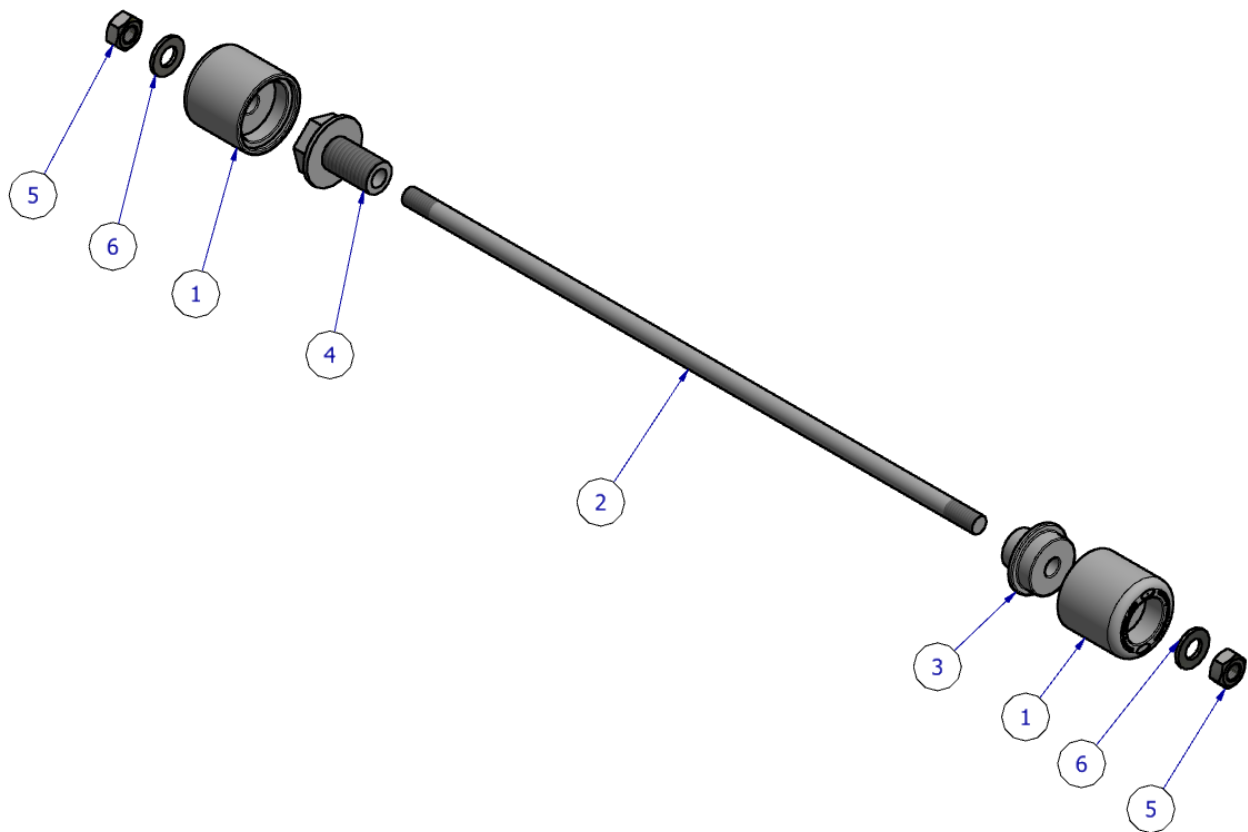
THE PARTS SHOWN MAY BE REPRESENTATIVE ONLY (FOR CLARITY OF INSTRUCTIONS ONLY)

**TOOLS REQUIRED**

- Socket set to include 2 x 13mm sockets
  - 22mm socket
- 2 x wrenches or similar
  - Torque wrench

**LEGEND**

- ITEM 1 = B0445M CRASH PROTECTOR (2)  
ITEM 2 = SB0131 SPINDLE BAR (308mm)  
ITEM 3 = S0715 SPACER - RHS  
ITEM 4 = H0001 SPINDLE NUT - LHS  
ITEM 5 = M8 NYLOC NUT (2)  
ITEM 6 = M8 19MM OD WASHER (2)

**FITTING INSTRUCTIONS**

- Remove the axle bolt from the left-hand side (as you sit on the bike) fork leg using a 22mm socket.
- Replace this bolt with the spindle nut (item 4) supplied in the R&G kit and tighten to the torque setting as specified by the manufacturer.
- Fit one nut (item 5) and washer (item 6) on spindle-bar (item 2), engage the nut so the plastic insert of nut is fully engaged and the bar protrudes by 1 to 2 threads. It is recommended to use a small amount of superglue or Loctite to fix this nut as this will aid when tightening the opposite side later.

R&G Racing

Unit 1, Shelley's Lane, East Worldham, Alton, Hampshire, GU34 3AQ  
Tel: +44 (0)1420 89007 [www.rg-racing.com](http://www.rg-racing.com) Email: [info@rg-racing.com](mailto:info@rg-racing.com)



- Feed spindle-bar with nut and washer through either crash protector (item 1) and through the metal spacer (item 3) with the larger diameter fitting inside the crash protector.
- Place this assembly through the front wheel spindle from the right-hand side so the bar protrudes through the spindle nut (item 4) and the spacer locates within the wheel spindle.
- Place the remaining crash protector (BO445M) over the exposed end of the spindle bar on the LHS.
- Fit the remaining washer (item 6) and Nyloc nut (item 5) from the kit onto the thread protruding from the crash protector.
- Tighten each nut on both sides evenly and ensure that the plastic insert of both nuts are fully engaged and equal on both sides.
- Do not overtighten – the Nyloc nuts will hold it tight.
- Check the fork protectors are secure and held firmly against the spindle nut and spacer and do not spin.
- After riding the bike, check the tightness of the nuts regularly (e.g. when cleaning the bike).

ISSUE 1 15/03/2019 (DM)

#### **CONSUMER NOTICE**

The catalogue description and any exhibition of samples are only broad indications of the Products and R&G may make design changes which do not diminish their performance or visual appeal and supplying them in such state shall conform to the order. The Buyer acknowledges no representation or warranty (other than as to title) has been given or will apply to the Products other than those in R&G's order or confirmation and the Buyer confirms it has chosen the Products as being of merchantable quality and suitable for its particular purposes. Where R&G fits the Products or undertakes other services it shall exercise reasonable skill and care and rectify any fault free of charge unless the workmanship has been disturbed. The Buyer is responsible for ensuring that the warranty on the motorcycle is not affected by the fitting of the Products. On return of any defective Products R&G shall at its option either supply a replacement or refund the purchase money but shall not be liable if the Products have been modified or used or maintained otherwise than in accordance with R&G's or manufacturer's instructions and good engineering practice or if the defect arises from accident or neglect. Other than identified above and subject to R&G not limiting its liability for causing death and personal injury, it shall not be liable for indirect or consequential loss and otherwise its liability shall be limited to the amounts paid by the Buyer for the Products or the fitting or service concerned. These terms do not affect the Buyer's statutory rights.

#### **R&G RACING RETURNS POLICY (NON-FAULTY GOODS)**

Returns must be pre-authorised (if not pre-authorised the return will be rejected). Goods may only be returned direct to us if they were purchased direct from us (customer must prove if necessary). Otherwise to be returned to original vendor. Goods must be in re-sellable condition, in the opinion of R&G Racing. All returns are subject to a 25% restocking and handling fee (25% of the gross value exc. P&P – at the prevailing price at time of purchase). The customer must pay any and all carriage charges. No returns of discontinued products, unless within 14 days of purchase. This policy does not affect your statutory rights and does not refer to faulty goods.



**NOTICE DE MONTAGE POUR FP0219BK PROTECTIONS FOURCHE  
HONDA CB650R + CBR650R 2019-**



**Le kit contient les articles exposés ci-dessous, vérifier que toutes les pièces soient présentes avant de procéder au montage.**

**La façon dont le kit est emballé ne correspond pas forcément à la façon de monter les pièces sur la moto.**

Notez que si les kits sont emballés avec un tube en plastique qui sépare les composants sur l'axe, ce tube doit être jeté.

LES PARTIES PRESENTEES PEUVENT ETRE UNIQUEMENT REPRESENTATIVES  
(POUR LA CLARTE DES INSTRUCTIONS UNIQUEMENT)

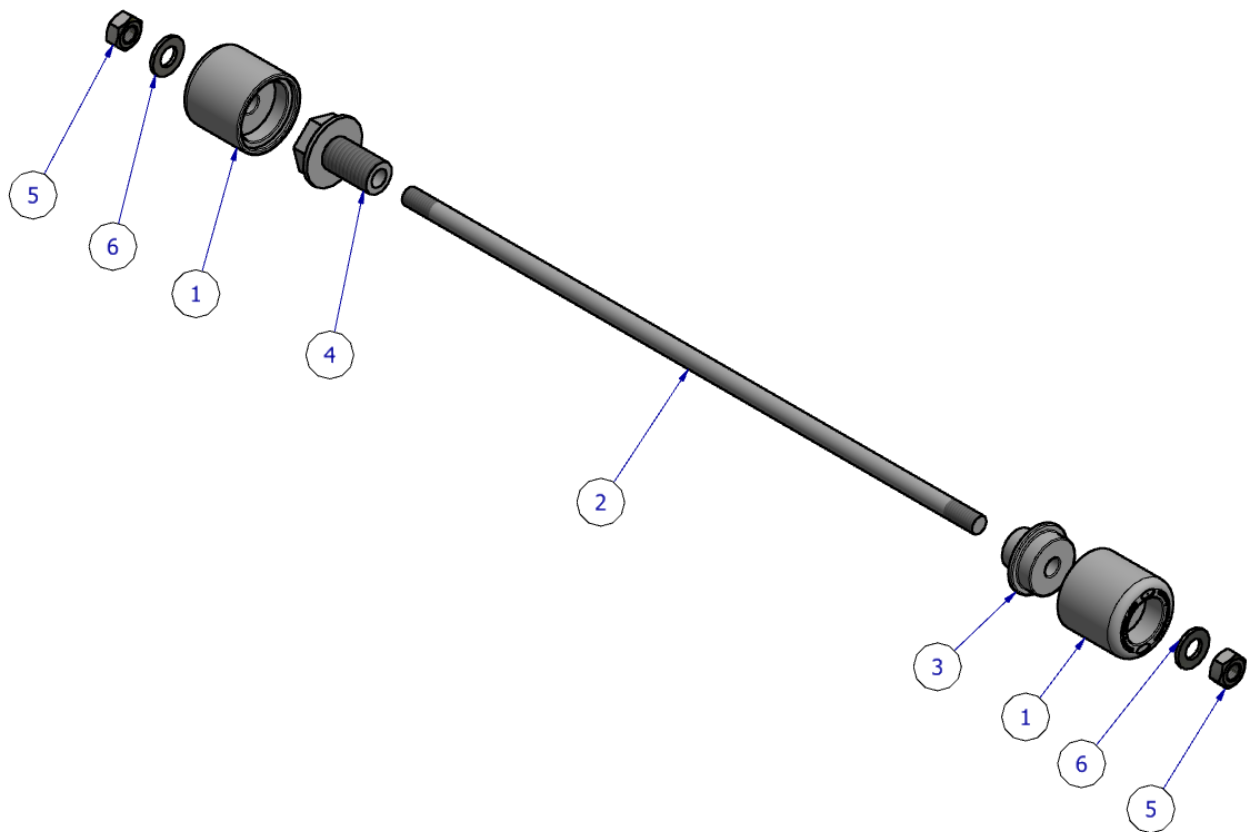
**OUTILS REQUIS**

- Clé à cliquet + douilles 2 x 13mm
  - Clé à molette 22mm
- x2 clés à cliquet ou similaire
  - Clé dynamométrique



### **LÉGENDE**

- ARTICLE 1 = B0445M BARRE DE PROTECTION (2)  
ARTICLE 2 = SB0131 AXE (308mm)  
ARTICLE 3 = S0715 ENTRETOISE - CÔTÉ DROIT  
ARTICLE 4 = H0001 ÉCROU D'AXE - CÔTÉ GAUCHE  
ARTICLE 5 = M8 ÉCROU (2)  
ARTICLE 6 = M8 19MM RONDELLE (2)



### **NOTICE DE MONTAGE**

- Enlever le boulon de moyeu du côté gauche (lorsqu'on est assis sur la moto) de la jambe de fourche, en utilisant une clé à cliquet + douille de 22mm.
- Replacer ce boulon avec un écrou de moyeu (article 4) fourni dans le kit R&G puis serrer aux valeurs de serrage recommandées par le fabricant.
- Insérer un écrou (article 5) et une rondelle (article 6) sur l'axe de moyeu (article 2), engager l'écrou de façon à ce que l'insert en plastique soit complètement engagé et que l'axe dépasse d'un à 2 filetages. Il est recommandé d'utiliser un

R&G Racing

Unit 1, Shelley's Lane, East Worldham, Alton, Hampshire, GU34 3AQ  
Tel: +44 (0)1420 89007 [www.rg-racing.com](http://www.rg-racing.com) Email: [info@rg-racing.com](mailto:info@rg-racing.com)



- peu de superglue ou de la Loctite pour fixer l'écrou, car cela aider pour serrer le côté oppose par la suite.
- Passer l'axe de moyeu avec écrou et rondelle dans l'une des protections crash (article 1) puis dans l'entretoise métallique (article 3) avec le diamètre le plus large à l'intérieur de la protection crash.
  - Placer cet ensemble dans le moyeu de roue avant du côté droit de façon à ce que l'axe dépasse de l'écrou de moyeu (article 4) et que l'entretoise se place dans le moyeu de la roue.
  - Placer la protection crash restante (BO445M) sur l'extrémité de l'axe du côté gauche.
  - Insérer la rondelle restante (article 6) et un écrou (article 5) du kit sur le filetage dépassant de la protection crash.
  - Serrer chaque écrou des 2 côtés de façon identique puis veiller à ce que l'insert plastique des 2 écrous soit complètement engagé et identique des 2 côtés.
  - Ne pas trop bloquer – les écrous fixent l'ensemble.
  - Vérifier que les protections fourche soient correctement serrées et fixées fermement contre l'écrou de moyeu et l'entretoise, et ne tournent pas.
  - Après avoir utilisé la moto, vérifier le serrage des écrous régulièrement (par exemple lors du nettoyage de la moto).

ISSUE 1 15/03/2019 (DM)

#### **CONSUMER NOTICE**

The catalogue description and any exhibition of samples are only broad indications of the Products and R&G may make design changes which do not diminish their performance or visual appeal and supplying them in such state shall conform to the order. The Buyer acknowledges no representation or warranty (other than as to title) has been given or will apply to the Products other than those in R&G's order or confirmation and the Buyer confirms it has chosen the Products as being of merchantable quality and suitable for its particular purposes. Where R&G fits the Products or undertakes other services it shall exercise reasonable skill and care and rectify any fault free of charge unless the workmanship has been disturbed. The Buyer is responsible for ensuring that the warranty on the motorcycle is not affected by the fitting of the Products. On return of any defective Products R&G shall at its option either supply a replacement or refund the purchase money but shall not be liable if the Products have been modified or used or maintained otherwise than in accordance with R&G's or manufacturer's instructions and good engineering practice or if the defect arises from accident or neglect. Other than identified above and subject to R&G not limiting its liability for causing death and personal injury, it shall not be liable for indirect or consequential loss and otherwise its liability shall be limited to the amounts paid by the Buyer for the Products or the fitting or service concerned. These terms do not affect the Buyer's statutory rights.

#### **R&G RACING RETURNS POLICY (NON-FAULTY GOODS)**

Returns must be pre-authorized (if not pre-authorized the return will be rejected). Goods may only be returned direct to us if they were purchased direct from us (customer must prove if necessary). Otherwise to be returned to original vendor. Goods must be in re-sellable condition, in the opinion of R&G Racing. All returns are subject to a 25% restocking and handling fee (25% of the gross value exc. P&P – at the prevailing price at time of purchase). The customer must pay any and all carriage charges. No returns of discontinued products, unless within 14 days of purchase. This policy does not affect your statutory rights and does not refer to faulty goods.





**MONTAGEANLEITUNG FÜR FP0219BK GABELPROTEKTOREN  
HONDA CB650R + CBR650R 2019-**



**ALLE TEILE SIND UNTEN ABGEBILDET UND GEKENNZEICHNET.  
BEVOR SIE MIT DER MONTAGE BEGINNEN, ÜBERPRÜFEN SIE, DASS  
ALLE TEILE VORHANDEN SIND.**

**Hinweis: Die Verpackung der Teile stellt nicht die Reihenfolge der Montage dar.**

Hinweis für Kits mit Plastikunterlegscheiben an den Schrauben – Diese Plastikunterlegscheiben werden nicht für den Einbau benötigt!

DIE UNTEN ABGEBILDETEN TEILE DIENEN LEDIGLICH ZUR ERKLÄRUNG

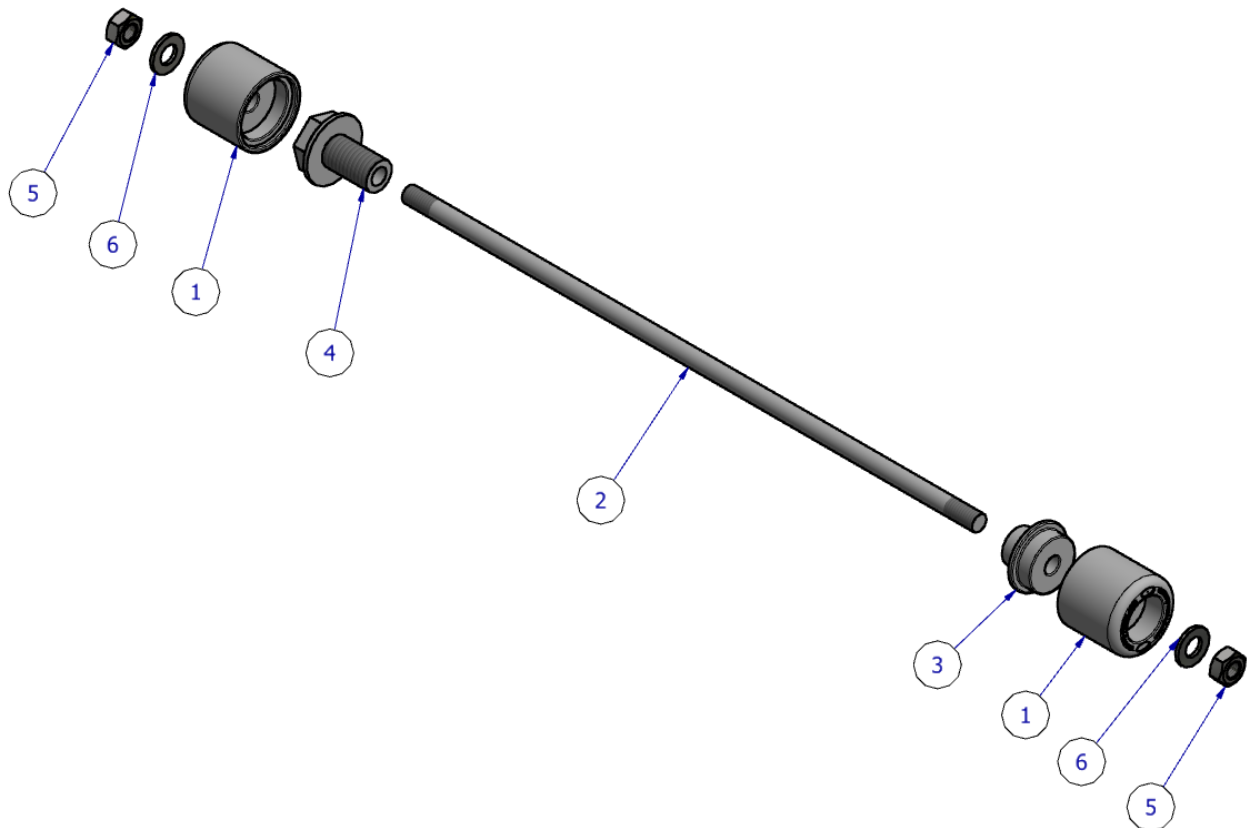
**SIE BENÖTIGEN FOLGENDES WERKZEUG**

- Satz Steckschlüssel mit 2 x 13mm Steckschlüssel
  - 22mm Steckschlüsseleinsatz
  - 2 x Schraubenschlüssel o.Ä.
  - Drehmomentschlüssel



### **LIEFERUMFANG**

- ARTIKEL 1 = B0445M STURZPAD (2)
- ARTIKEL 2 = SB0131 VERBINDUNGSSTANGE (308mm)
- ARTIKEL 3 = S0715 DISTANZHALTER - RHS
- ARTIKEL 4 = H0001 RADMUTTER - LHS
- ARTIKEL 5 = M8 SELBSTSICHERNDE MUTTER (2)
- ARTIKEL 6 = M8 19MM OD UNTERLEGSSCHEIBE (2)



### **MONTAGEANLEITUNG**

- Entfernen Sie den Achsbolzen vom Gabelbein an der linken Seite (in Fahrtrichtung) mit einem 22mm Steckschlüssel.
- Dies mit der Radmutter vom Kit (Artikel 4) ersetzen und mit dem empfohlenen Anzugsdrehmoment des Herstellers befestigen.
- Eine Mutter (Artikel 5) und eine Unterlegscheibe (Artikel 6) an der Verbindungsstange (Artikel 2) abringen. Die Mutter so anbringen, dass der





- Kunststoffeinsatz der Mutter komplett eingerastet ist und die Verbindungsstange mit 1 bis 2 Gewinden hervorsteht. Die Verwendung von etwas Sekundenkleber oder Loctite wird empfohlen, um die Mutter zu fixieren bzw. das Festziehen an der anderen Seite später zu vereinfachen.
- Die Verbindungsstange mit der Mutter und der Unterlegscheibe durch ein Sturzpad (Artikel 1) und den Metall-Distanzhalter (Artikel 3) führen – der große Durchmesser passt ins Innere des Sturzpads.
  - Von der rechten Seite beginnend, die Einheit durch die Vorderachse schieben, sodass die Verbindungsstange aus der Radmutter (Artikel 4) hervorsteht und der Distanzhalter innerhalb der Achsnabe platziert ist.
  - Das übrige Sturzpad (BO445M) am hervorstehenden Ende der Verbindungsstange an der linken Seite anbringen.
  - Montieren Sie die übrige Unterlegscheibe (Artikel 6) und selbstsichernde Mutter (Artikel 5) vom Kit an dem Gewinde, welches am Sturzpad hervorsteht.
  - Die Muttern an beiden Seiten gleichmäßig festziehen und darauf achten, dass der Kunststoffeinsatz bei beiden Muttern komplett und gleichmäßig eingerastet ist.
  - Nicht überziehen – die selbstsichernden Muttern halten das fest!
  - Überprüfen Sie, dass die Gabelprotektoren sicher und fest an der Radmutter und dem Distanzhalter befestigt sind und sich nicht drehen.
  - Überprüfen Sie regelmäßig die Festigkeit der Muttern (z.B. beim Putzen, nachdem Sie mit Motorrad gefahren sind).

AUSGABE 1 15/03/2019 (DM)

#### CONSUMER NOTICE

The catalogue description and any exhibition of samples are only broad indications of the Products and R&G may make design changes which do not diminish their performance or visual appeal and supplying them in such state shall conform to the order. The Buyer acknowledges no representation or warranty (other than as to title) has been given or will apply to the Products other than those in R&G's order or confirmation and the Buyer confirms it has chosen the Products as being of merchantable quality and suitable for its particular purposes. Where R&G fits the Products or undertakes other services it shall exercise reasonable skill and care and rectify any fault free of charge unless the workmanship has been disturbed. The Buyer is responsible for ensuring that the warranty on the motorcycle is not affected by the fitting of the Products. On return of any defective Products R&G shall at its option either supply a replacement or refund the purchase money but shall not be liable if the Products have been modified or used or maintained otherwise than in accordance with R&G's or manufacturer's instructions and good engineering practice or if the defect arises from accident or neglect. Other than identified above and subject to R&G not limiting its liability for causing death and personal injury, it shall not be liable for indirect or consequential loss and otherwise its liability shall be limited to the amounts paid by the Buyer for the Products or the fitting or service concerned. These terms do not affect the Buyer's statutory rights.

#### R&G RACING RETURNS POLICY (NON-FAULTY GOODS)

Returns must be pre-authorized (if not pre-authorized the return will be rejected). Goods may only be returned direct to us if they were purchased direct from us (customer must prove if necessary). Otherwise to be returned to original vendor. Goods must be in re-sellable condition, in the opinion of R&G Racing. All returns are subject to a 25% restocking and handling fee (25% of the gross value exc. P&P – at the prevailing price at time of purchase). The customer must pay any and all carriage charges. No returns of discontinued products, unless within 14 days of purchase. This policy does not affect your statutory rights and does not refer to faulty goods.